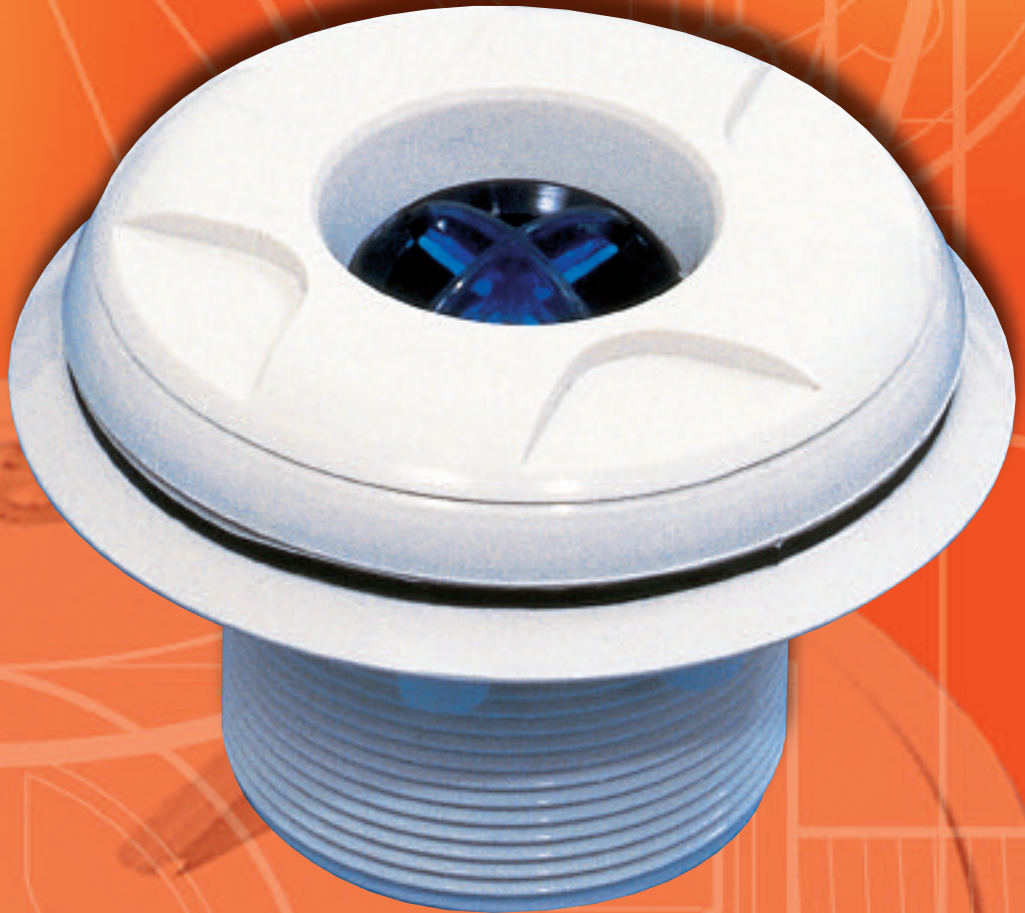


## INLET & RETURN FITTINGS

### FEATURES

- Available in ABS as standard
- Chrome plated brass finish for concrete pool fittings
- Eyeball directional inlet with safety grille
- Vacuum fittings supplied with removable plug
- For liner installations a watertight clamp plate and cover plate hide the fixing screws
- All fittings have interchangeable front faces
- Fittings available for all methods of pool construction
- All liner inlets are through wall fittings



*Certikin's range of top quality swimming equipment is designed for all types of swimming pools. By using only Certikin equipment you will ensure ease of supply now and in the future.*



**FLOW RATES FOR EACH FITTING**

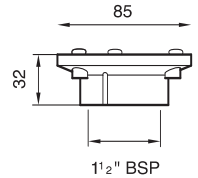
Code	HD5015	HD502	CK5015	CK502	HD53C	HD53L	HD53PL	HD54C	HD54L	HD54PL	CK20	CK202	HD20	HD20L	HD20PL
Flow Max	5m <sup>3</sup> /Hr	9m <sup>3</sup> /Hr	5m <sup>3</sup> /Hr	9m <sup>3</sup> /Hr	5m <sup>3</sup> /Hr	5m <sup>3</sup> /Hr	5m <sup>3</sup> /Hr	5m <sup>3</sup> /Hr	5m <sup>3</sup> /Hr	5m <sup>3</sup> /Hr	5m <sup>3</sup> /Hr	9m <sup>3</sup> /Hr	5m <sup>3</sup> /Hr	5m <sup>3</sup> /Hr	5m <sup>3</sup> /Hr

**Adjustable Inlets for concrete pools  
CK/HD 5015/502**

Manufactured in chrome plated brass with stainless steel plates (CK) or in plastic (HD) Certikin adjustable inlets allow easy control of flow rates into the pool. The CK5015/502 can be installed in the pool floor for increased flow – particularly suitable for level deck pools.



**CK5015**

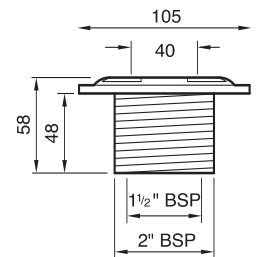
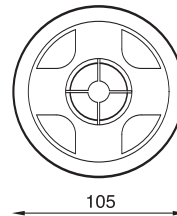


**Directional Inlets HD53 Eyeball Inlet**

Direction of flow into pool is easily controlled by adjusting the “Eyeball” which features a safety grille to prevent children’s prying fingers. By adjusting the direction of flow, heating and chemical dispersion is made easier



**EYEBALL INLET  
HD53 C**

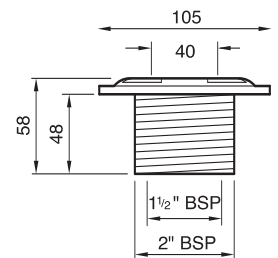


**Vacuum Points HD20 (Concrete or liner)  
CK20/202 (Concrete only)**

For use where a an automatic pool cleaner or vacuum hose (use a Certikin HD23 hose-to-wall connector) is to be fitted. The vacuum point can be plumbed in for use either as a suction point or return fitting (depending on type of cleaner to be used). All types of vacuum fittings are supplied with a removable plug.



**VACUUM POINT  
HD20**

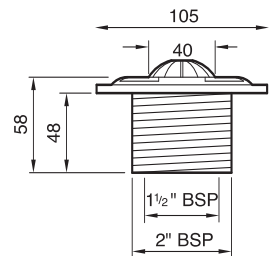
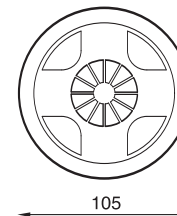


**HD54**

Sited low down on the pool wall and used as a low level suction point. Also used in conjunction with the HD108 Automatic Level Controller. See SPATA guides for recommended suction velocities.



**SUCTION GRILLE  
HD54 C**



**Inlets & Returns**

Notice: Available for all types of pool construction; when ordering please use the appropriate suffix as listed below:

C – for concrete pools

L – for liner pools

PL – for prefabricated pools with liners

Both the liner types include a watertight clamp plate and a cover plate which hides the fixing screws. Some of the range are available in a choice of plastic or chrome plated brass – please use the prefix as listed below:

HD – plastic

CK – chrome plated brass (for concrete pools only)



HD55

HD54L

HD502

CK502

HD5015

CK5015

CK20

HD20

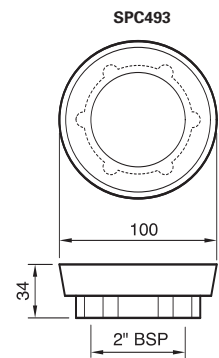
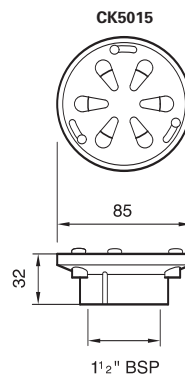
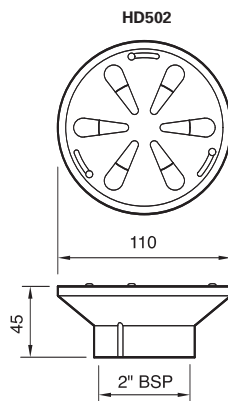
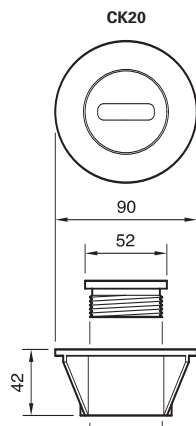
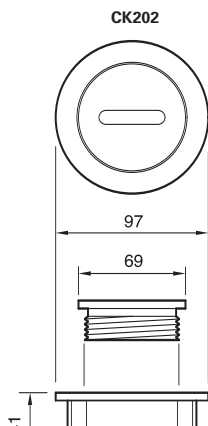
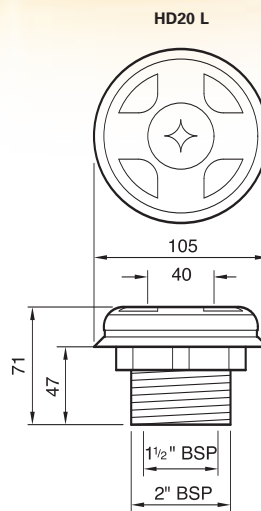
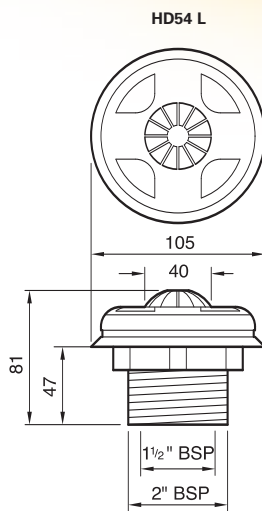
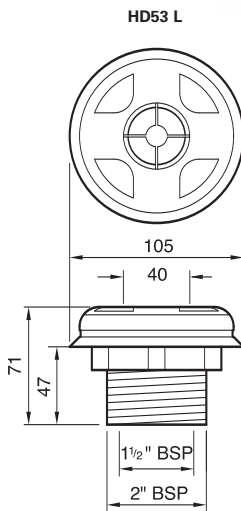
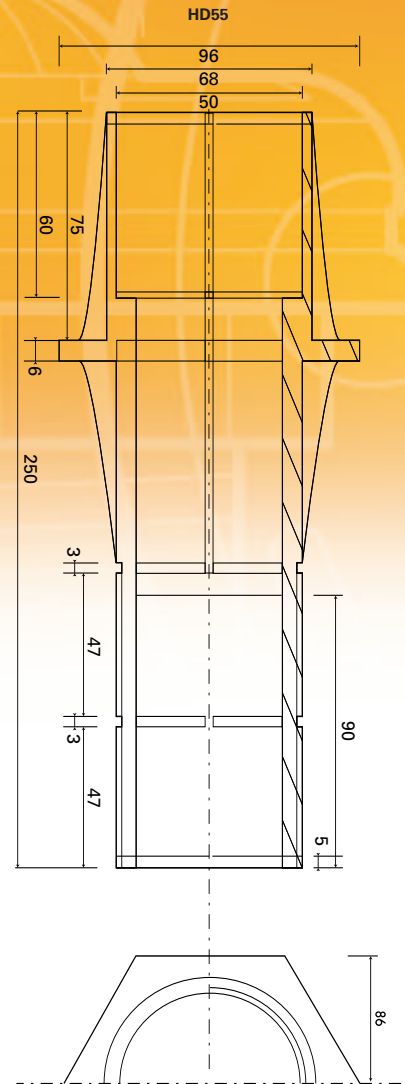
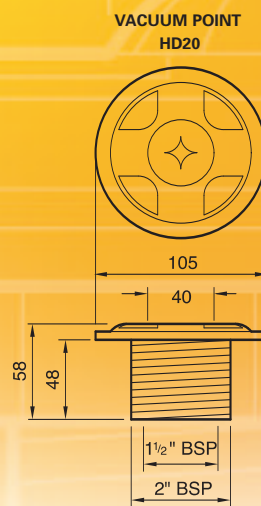
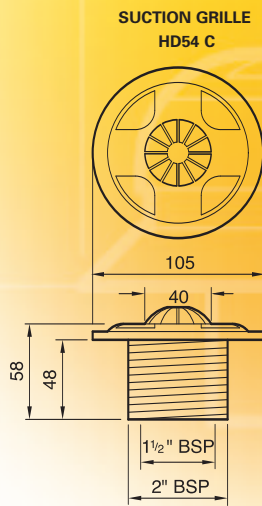
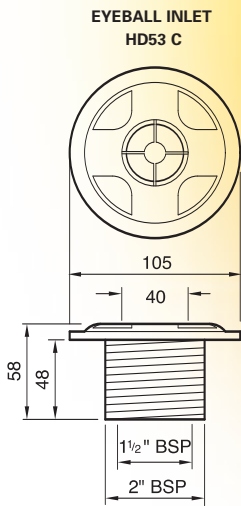
HD53 L

SPC493

HD20 L

HD54 C

HD53 C



14.07.04



This literature is intended as a guide. The Company reserve the right to change the specification without notice.